

Pressure relief valves

Type DV2

1000 bar
3 up to 12 l/min

Features

- Direct operated
- Max. pressure adjustable by locking nut
- Pressure relief valves with threaded connection

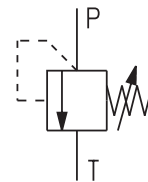


Design

- Cone seat valve

Applications

- In-line mounting systems
- Test bench



Technical data

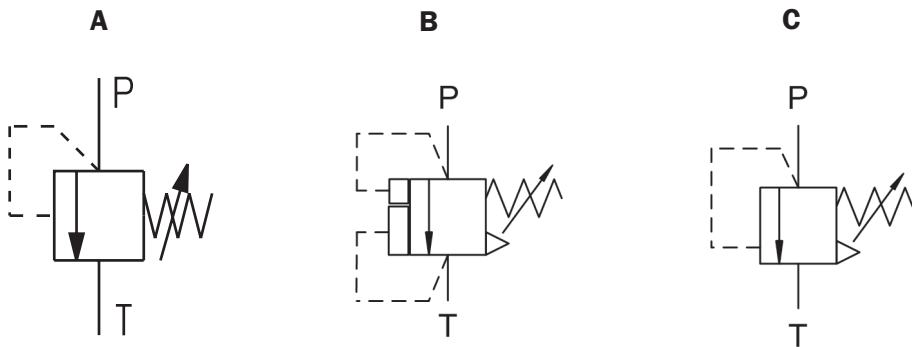
Hydraulic fluid	Mineral oil according to DIN 51524 (other fluids on request)
Fluid temperature range	- 20 to 80 °C
Ambient temperature range	- 30 to 50 °C
Viscosity range	5 bis 400 mm ² /s
Max. operating pressure port P	see product information
Max. operating pressure port T	see product information
Max. flow rate	see product information
Filtration (recommendation)	According to NAS 1638, class 6 resp. ISO/DIN 4406, class 17/15/12
Weight	see dimension drawings
Material	Valve body: galvanized steel (black chromated) Cartridge: galvanized steel

Type DV2
1000 bar 3 up to 12 l/min

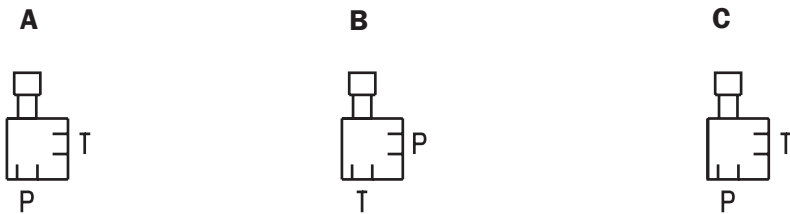
Ordering code

Example	DV2 - 3 - 400 - R - A - V - 00
Pressure relief valve	
Port size	3 5
Max. operating pressure [bar]	see product information
Adjustments	R with rotation knob F with protection cap
Hydraulic Schamantic	A B C
Seals	V (FPM) other seal materials on request
	special design 01 ... 99 (00 for standard)
	Part index Please leave blank (small letters a-d; different letters do not effect interchangeability)
	Desing revision Capital letters A-Z; identical letters equal same connecting dimensions

Hydraulic schematics



Ports / flow direction



Product information

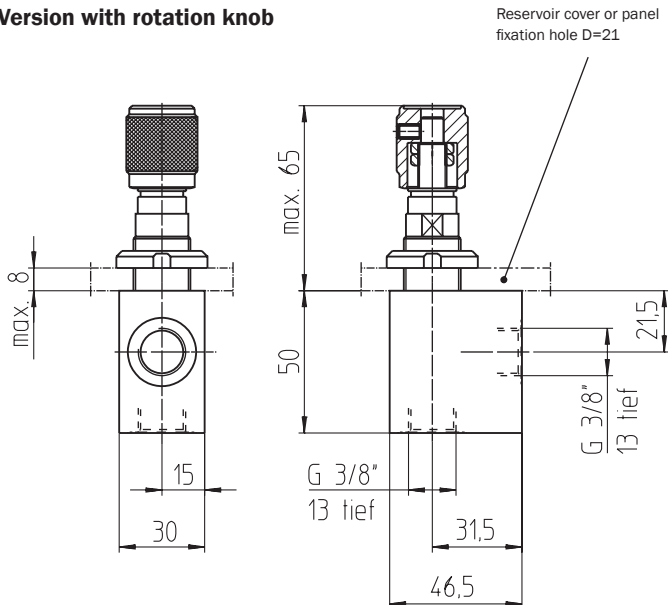
Type	Port size	max. flow rate [l/min]	Hydraulic schematic	max. Operating pressure [bar]	max. Tank-pressure [bar]	Adjustment	Influence on back pressure	Weight [kg]	Part no.
DV2-3-1000-R-A-V-A*00	3	3	A	1000	100	Rotation knob	1	0,6	3682522
DV2-3-1000-F-A-V-A*00	3	3	A	1000	100	Protection cap	1	0,6	3682520
DV2-5-1000-R-B-V-A*00	5	25	B	1000	50	Rotation knob	2	0,6	3682546*
DV2-5-1000-F-B-V-A*00	5	25	B	1000	50	Protection cap	2	0,6	3682545
DV2-5-200-R-C-V-A*00	5	12	C	200	800	Rotation knob	3	0,7	3682676
DV2-5-200-F-C-V-A*00	5	12	C	200	800	Protection cap	3	0,7	3682654
DV2-5-400-R-C-V-A*00	5	12	C	400	600	Rotation knob	3	0,7	3682679
DV2-5-400-F-C-V-A*00	5	12	C	400	600	Protection cap	3	0,7	3682678
DV2-5-600-R-C-V-A*00	5	12	C	600	400	Rotation knob	3	0,7	3667268
DV2-5-600-F-C-V-A*00	5	12	C	600	400	Protection cap	3	0,7	3682680

- 1: Pressure in P is increased by back pressure in T
- 2: Pressure in P is reduced by 2,6 times back pressure in T
- 3: Back pressure in T does not affect pressure in P

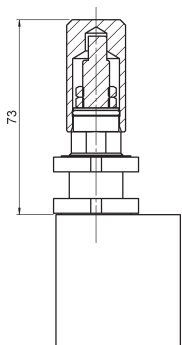
* available also with NPT-connection thread

Connections/Flow direction

Version with rotation knob

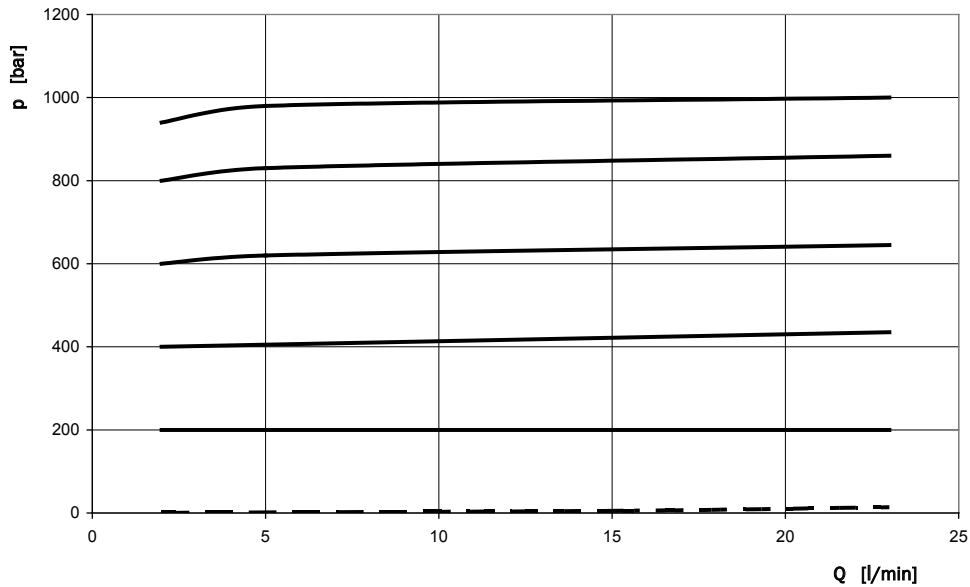


Version with protection cap

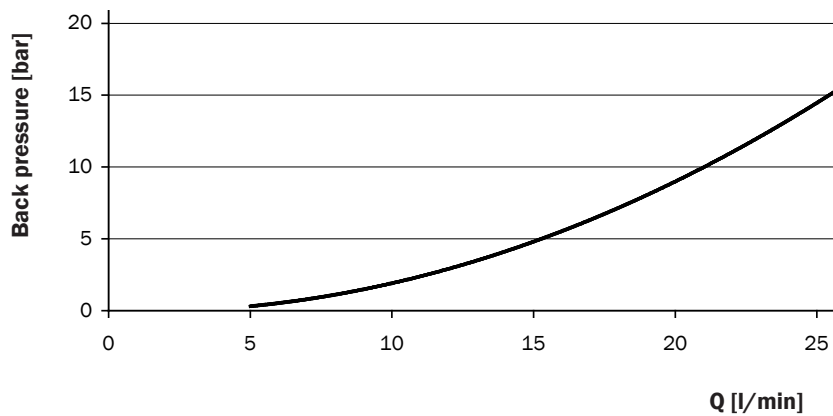


Characteristics

Pressure in function of flow (for circuit symbol B)



Back pressure with released spring (for circuit symbol B)



Bieri Hydraulik AG

Könizstrasse 274
CH-3097 Liebefeld
Tel. +41 31 970 09 09 | Fax +41 31 970 09 10
info@bierihydraulics.com | www.bierihydraulics.com

The information in this brochure relates to the operating conditions and applications described.

For applications and operating conditions not described, please contact the relevant technical department.

Subject to technical modifications.